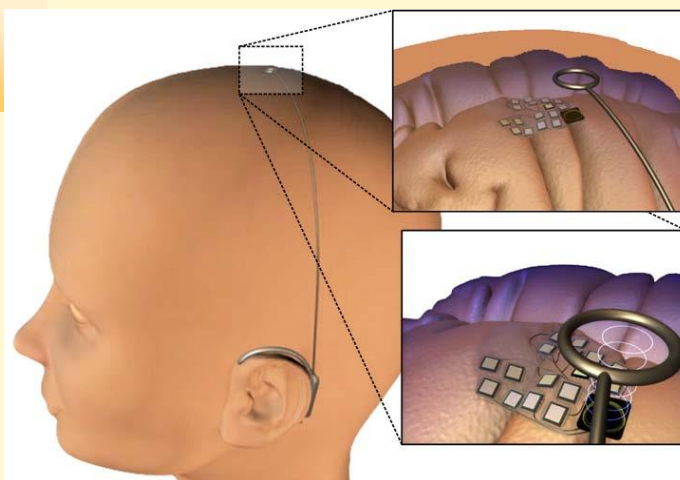


## Polystim Neurotechnologies Laboratory

**Staff:** 1 professor, 2 engineers and technician  
10 PhD students, 4 post-docs and 3 temporary staff

### Research topics in Micro and NanoSystems

- Intracortical sensing
- Intracortical stimulation
- Optical-based diagnostics



**NAMIS contact: Pr. Mohamad Sawan**

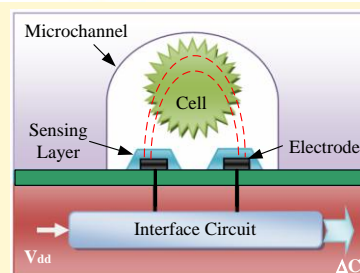
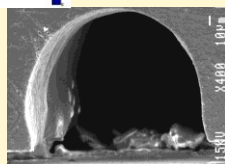
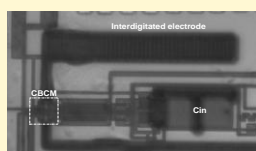
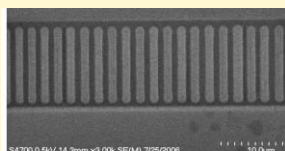
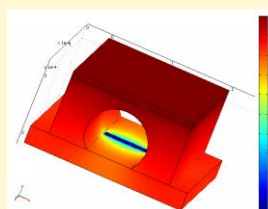
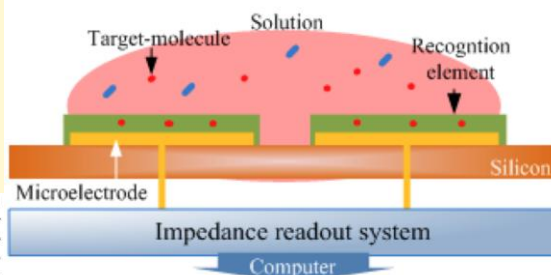
**Phone: +1 514 340 4711 x5943, e-mail: mohamad.sawan@polymtl.ca**

## Assembly & Packaging Laboratory (LASEM)

**Staff:** 1 researcher, 1 professor, 1 technician  
2 PhD students

### Research topics in Micro and NanoSystems

- Lab-on-chip
- Diagnostic tools



**NAMIS contact: Pr. Mohamad Sawan**

**Phone: +1 514 340 471 x5943, e-mail: mohamad.sawan@polymtl.ca**